

# Grifftabellen für Arpeggien

( 1 )

G<sup>7</sup>

2./3. Lage

5./6. Lage

7. Lage

9./10. Lage

12. Lage

# Grifftabellen für Arpeggien

## ( 2 )

Gm<sup>7</sup>

1./3. Lage

5./6. Lage

V

7./8. Lage

VI

9. Lage

IX

12. Lage

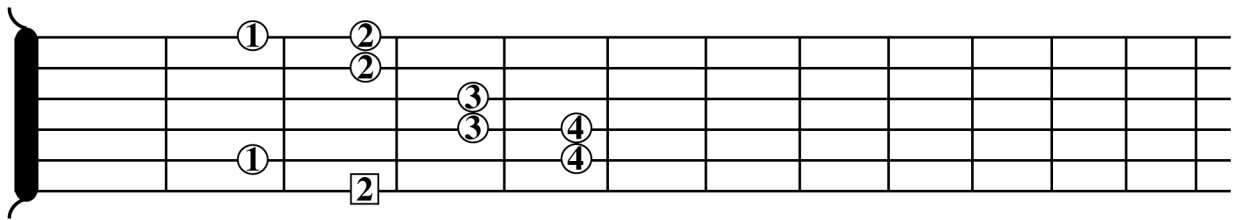
XII

# Grifftabellen für Arpeggien

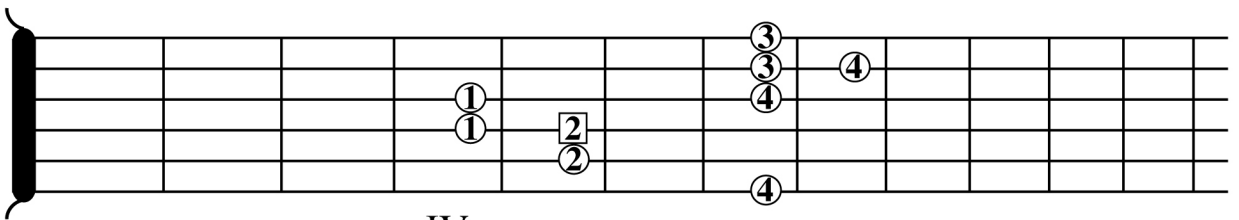
## ( 3 )

Gmaj<sup>7</sup>

2. Lage

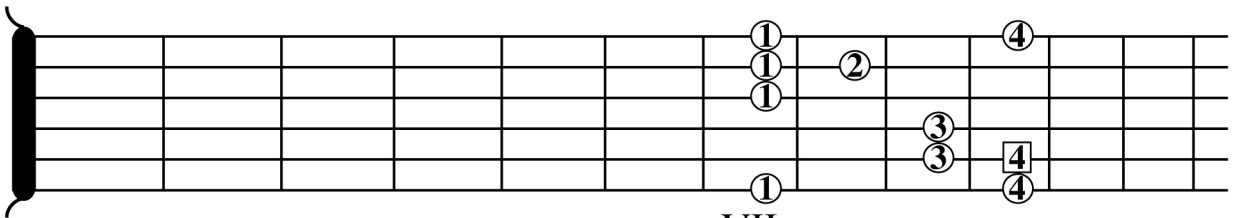


4./5. Lage



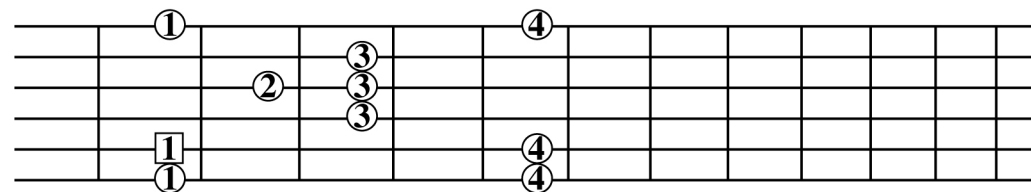
IV

7. Lage



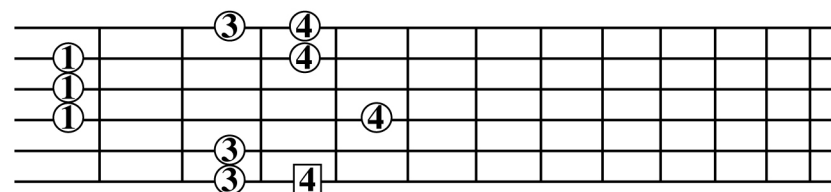
VII

9. Lage



IX

12. Lage



XII